

Specifications

Design Criteria

SANS 10160(Wind load) | SANS 10162(Structural)

Safe work load

Dead weight	A	120kg
Lateral loading (Front)	B	450kg
Lateral loading (Side)	C	400kg
Lateral loading (Back)	D	450kg
Torque (On tubing)	E	1500Nm

Parts list

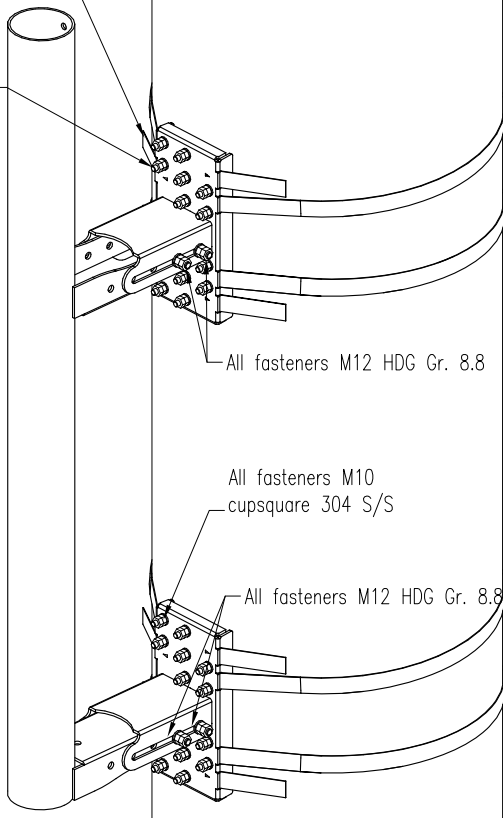
Qty/Description	Part number
1x 1.5m Ø114 pole	GR112/121/01-00
2x Monopole bracket	GR112/323/01-00
4x Long clamping bracket	GR112/301/02-00
8x Short clamping bracket	GR112/301/03-00

Fastners list

Description	Qty
M12x40 Setscrew HDG Gr. 8.8	8
M12 Hex nut HDG	16
M12 Flat washer HDG	16
M10x40 Cup square 304 S/S	28
M10 Hex nut 304 S/S	28
M10 Flat washer 304 S/S	28
31.8x1.2 flat strap (Galv.)	4x 4m lengths

Standard banded strapping tool used for tensioning straps

All fasteners M10 cupsquare 304 S/S



All fasteners M12 HDG Gr. 8.8

All fasteners M10 cupsquare 304 S/S

All fasteners M12 HDG Gr. 8.8

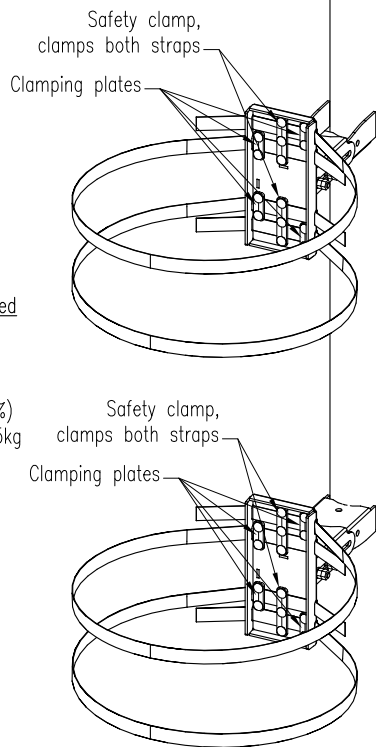
ISOMETRIC VIEW

Note:

- . Bracket can be tensioned from either side.
- . Center row of bolts is for safety clamp.
- . Install tensioning tool before releasing clamps.
- . Excess strapping to be removed (leave min. 80mm), and folded away to prevent injury. In future bracket can be re-tensioned should it be required.

Note:

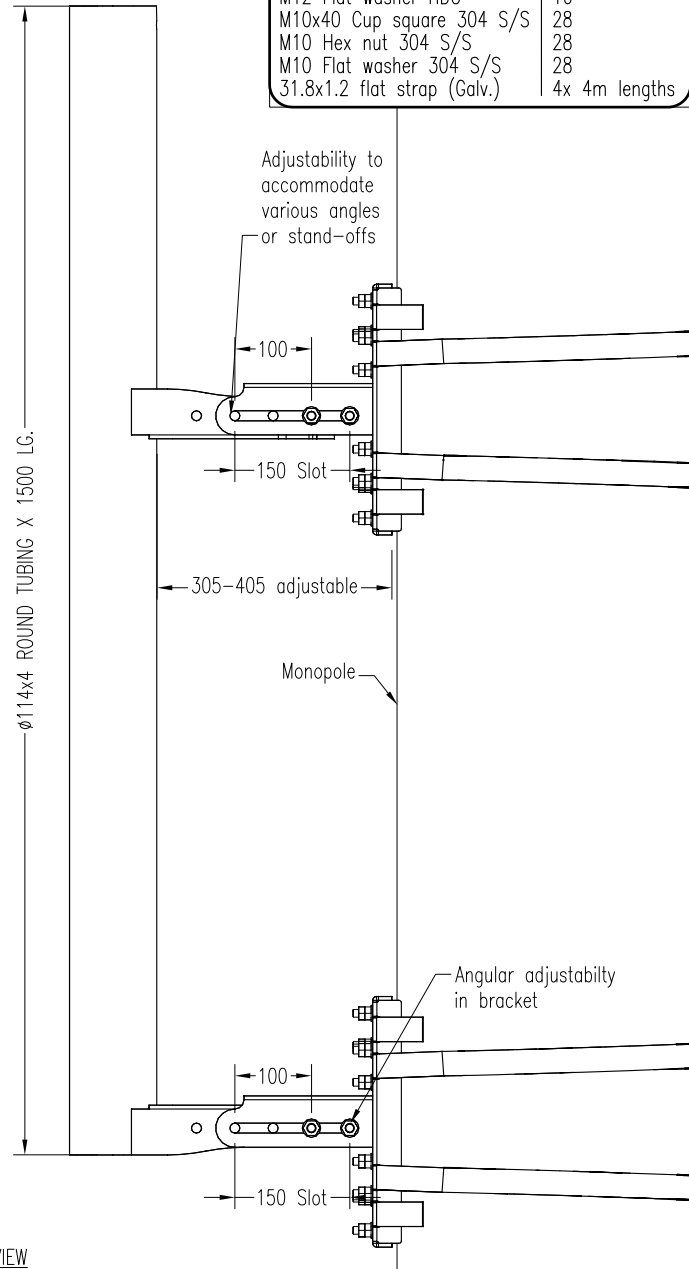
- . Values stated in Specifications are for bracket only, tower structure to be checked for additional loading before installation
- . All items finish hot dip galvanized
- . All 304 Stainless Steel fasteners to be torqued 45Nm(M10) & 80Nm(M12), (±10%)
- . Weight of bracket incl. fasteners = 40.5kg



Safety clamp, clamps both straps
Clamping plates

Safety clamp, clamps both straps
Clamping plates

ISOMETRIC VIEW (Monopole removed for clarity)



Adjustability to accommodate various angles or stand-offs

100

150 Slot

305-405 adjustable

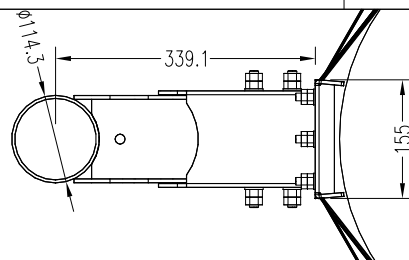
Monopole

Angular adjustability in bracket

100

150 Slot

SIDE VIEW



Ø114.3

339.1

155

TOP VIEW



Graffo Innovative wireless infrastructure solutions

Tel: +27 (0)21 905-0010

Fax: +27 (0)21 905-0020

Web: www.graffo.co.za

One-way Monopole

1.5m Ø114

Monopole range Ø600-1200

Part no. : GR112-323-00-00A