

Design Criteria

- . Basic wind speed: 40 m/s
- . Design category: CAT3A
- . Loading according to SANS 10160
- . Artificial base height of 0 m
- . Atmospheric pressure at sea level

Wind Loading

- . Standard Structure: 3 m² (Evenly distributed over the top 3 m) with base upgrade

Maintenance

- . First routine maintenance 6 months after erection
- . There after routine maintenance every 12 months

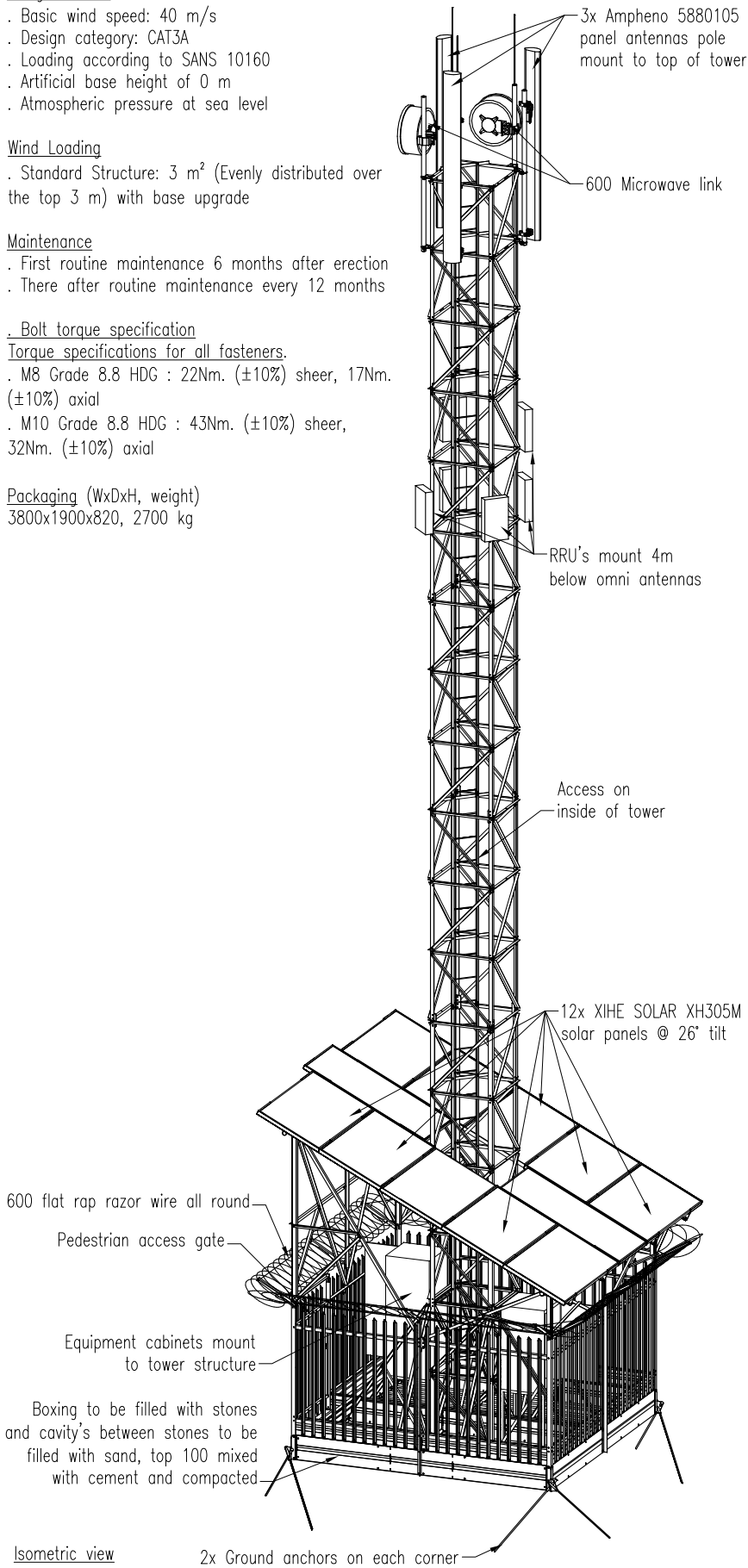
Bolt torque specification

Torque specifications for all fasteners.

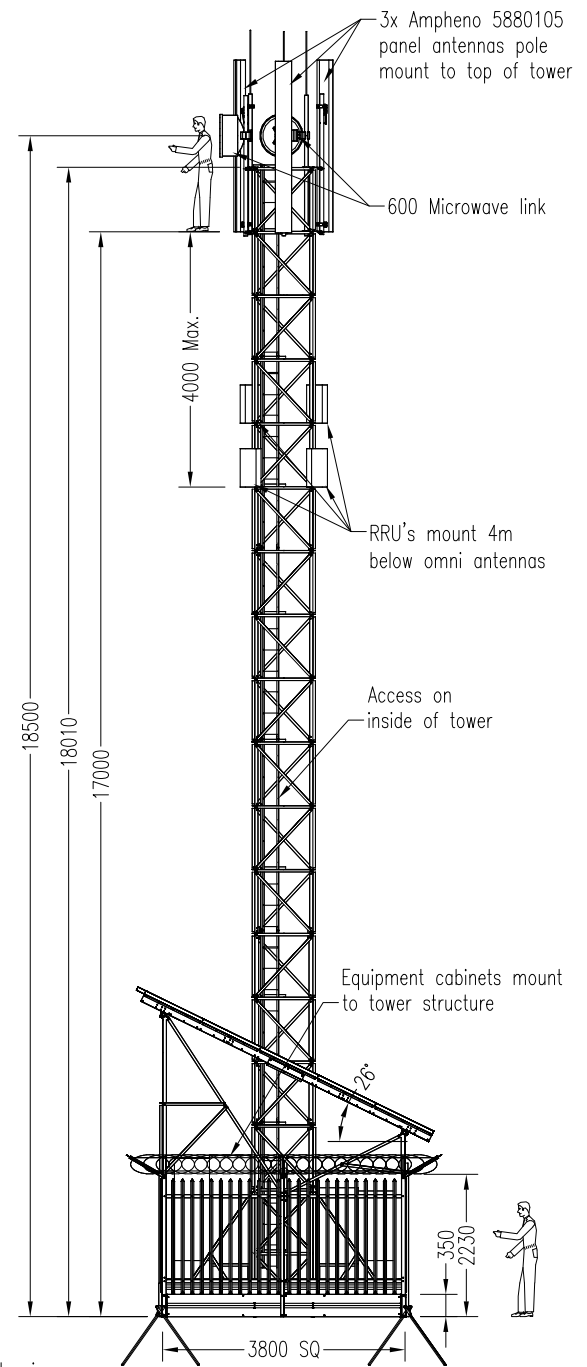
- . M8 Grade 8.8 HDG : 22Nm. (±10%) shear, 17Nm. (±10%) axial
- . M10 Grade 8.8 HDG : 43Nm. (±10%) shear, 32Nm. (±10%) axial

Packaging (WxDxH, weight)

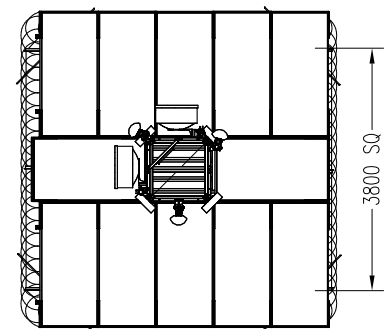
3800x1900x820, 2700 kg



Isometric view



Side view



Top view



Graffo Innovative wireless infrastructure solutions

Tel: +27 (0)21 905-0010

Fax: +27 (0)21 905-0020

Web: www.graffo.co.za

18m Lattice Tower with fencing (GR137-021-00-07A)